

**Transformers**

PT (TR1): Hammond 372BX (works with non-NOS 5Y3GT)  
 Hammond 290AEX (works best with NOS 5Y3GT)

OT (TR2): Hammond 1750E

**Tubes**

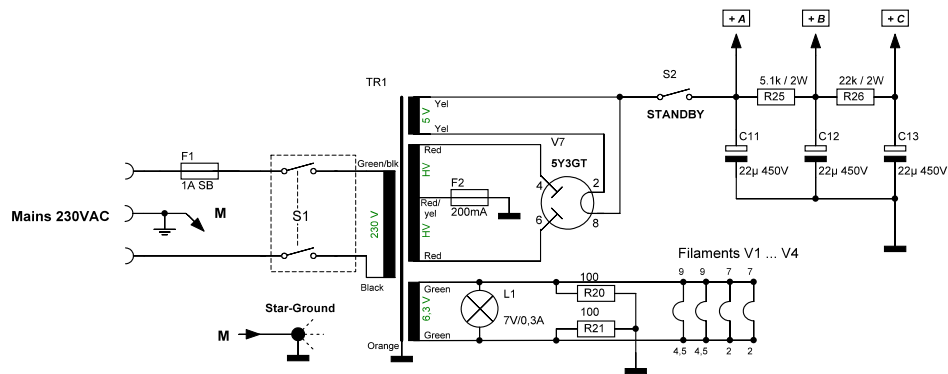
Pre-Amp: 12AY7 or 6072  
 Phase-Inverter: 12AX7 or ECC83  
 Power-Amp: 6V6GT  
 Rectifier: 5Y3GT

**Resistors**

All 1/2W = carbon composition, above = ceramic

**Capacitors**

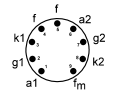
Coupling: Mallory 150s 630V  
 Low cap: Silver Mica  
 Electrolyte: e.g. F+T or similar



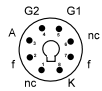
**Note:**

All resistors 1/2 Watt 10% tolerance, if not specified. All capacitors at 630 Volt rating, if not specified. Electrolytic capacitors attached to the cathodes are at least rated 25 Volt. Voltages read to ground with electronic voltmeter. Values shown may have a tolerance of + or - 10%.

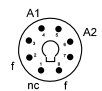
12AY7, 12AX7  
 7025, ECC81, 82, 83



6V6GT



5Y3GT



Fender Deluxe (5E3)			
Sheet		Fender Deluxe Circuit	
Code BB2008	Document fender_deluxe_docs.sp7	Rev. A1	
Date 25.06.2013	Last edit 13.56:31	Sheet	1 of 3